



BEACH GROVE

The place
TO BE

Beach Road, Kaiapoi, Waimakariri

BRING YOUR DREAM TO LIFE



BEACHGROVE, THE PLACE TO BE

Welcome to Beachgrove, a master-planned development walking distance from Kaiapoi's vibrant centre, surrounded by incredible recreational opportunities. Its location and affordability are a dream come true for young couples, young families and anyone choosing quality of life.

Perfect for first home buyers, families, investors and downsizers, Beachgrove has something for everyone.

For a highly affordable price, the impressive range of sections and house and land packages means that you will find your perfect spot, nestled in a friendly and safe community. Excellent local schools and shopping will meet all your needs, while access to Christchurch is now a breeze via the game-changing and nearly complete Northern Corridor.

At Beachgrove you'll find:

- 600sqm sections starting from \$189,000
- House and land packages starting from \$379,000
- A multi-staged development, with the first residents already happily established

We've laid the groundwork for you at Beachgrove – come and kickstart your own journey from here.



DEVELOPERS VISION

Walking the streets of the established community of Beachgrove today, you do not need to look far to find children riding their bikes through the streets and families enjoying all that Beachgrove has to offer. When the development team behind Beachgrove initially viewed the site in 2012 and envisioned the development that now stands today, an important part of their vision was to deliver affordable homes, without compromising on quality and to establish a real sense of community within the development.

The location further inspired the Beachgrove team to pursue this vision, neighboring Kaiapoi North School and the close proximity to the Kaiapoi town centre. Today, the developers early vision is evident throughout the master-planned development, with over 150 sections and homes now established at Beachgrove.

The properties already completed at Beachgrove are designed with sustainability and cost efficiency in mind. Not to mention the multiple other environmental benefits designed into this development – reduced commuter time, reduced congestion, improved walking and cycling, supported economic growth, improved safety, job creation and access to jobs.

A healthy home is as good for the environment, as it is for you. You can trust the choices available to you at Beachgrove.



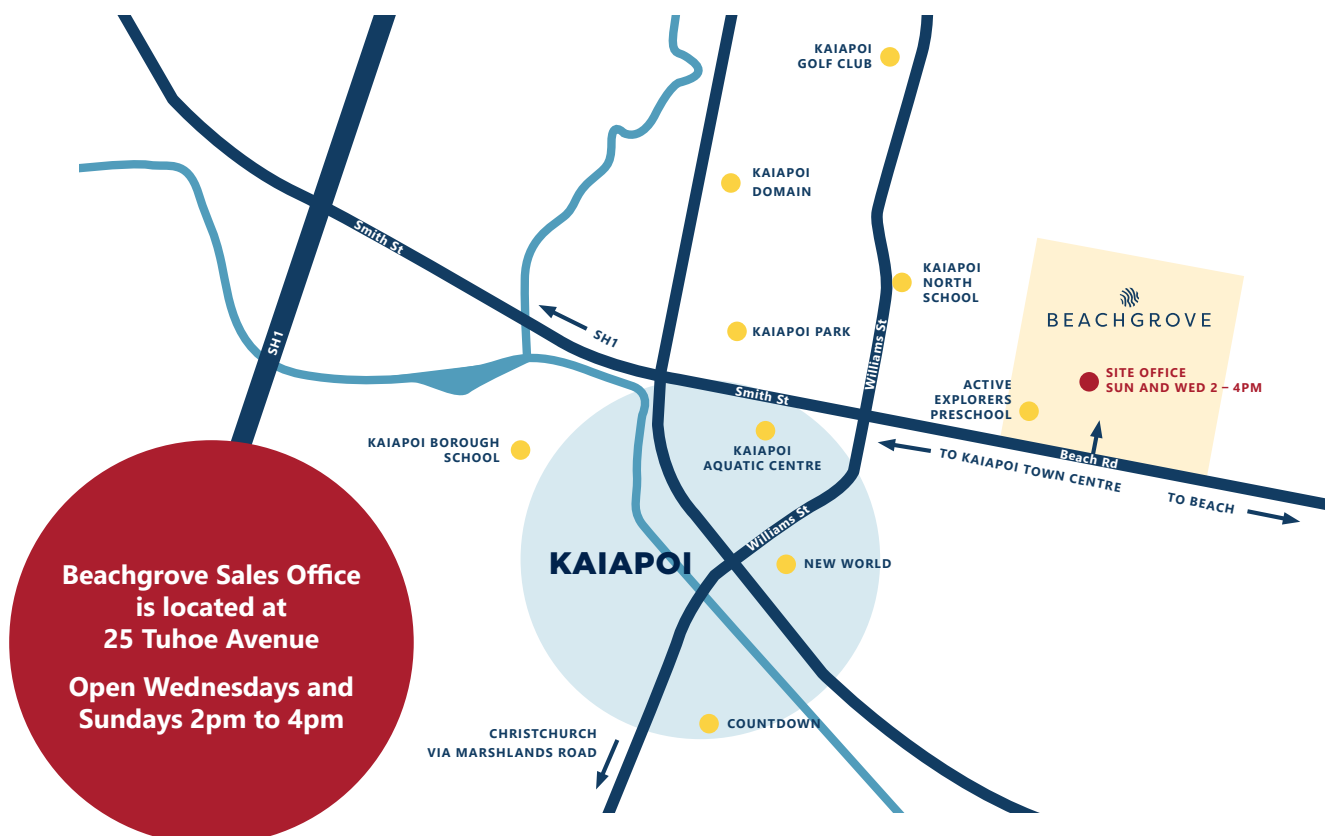
LIVING IN KAIAPOI

Congratulations, you are considering a purchase in one of New Zealand's fastest growing locations. Kaiapoi was already well established before the Canterbury earthquakes, therefore it has recovered exceptionally quickly. Well-deployed investment, both private and public, delivered exceptional residential, recreational and commercial opportunities for those seeking a successful and well-rounded life.

Kaiapoi is one of the main centres of the Waimakariri District. Built on the banks of the Kaiapoi River and close to the mouth of the Waimakariri River, it offers an abundance of outdoor and indoor aquatic activities, eateries, shopping and events. Just one highlight is the fabulous Kaiapoi Aquatic Centre, a year-round indoor, heated facility, boasting a six-lane 25 metre main pool, learners' pool and waterfall into the toddlers' pool.

The Waimakariri's ever-increasing population loves the combination of quality of life and convenience all around. Enjoy stunning local scenery on one of the many cycle or walkways. Get amongst the boutique galleries, farmers' markets and quality eateries.

From epic beaches to the forested foothills, bustling urban centres to rural hideaways, the region is full of people bringing their dream to life.



Stage TWO SECTIONS

**600SQM
SECTIONS
STARTING FROM
\$189,000**

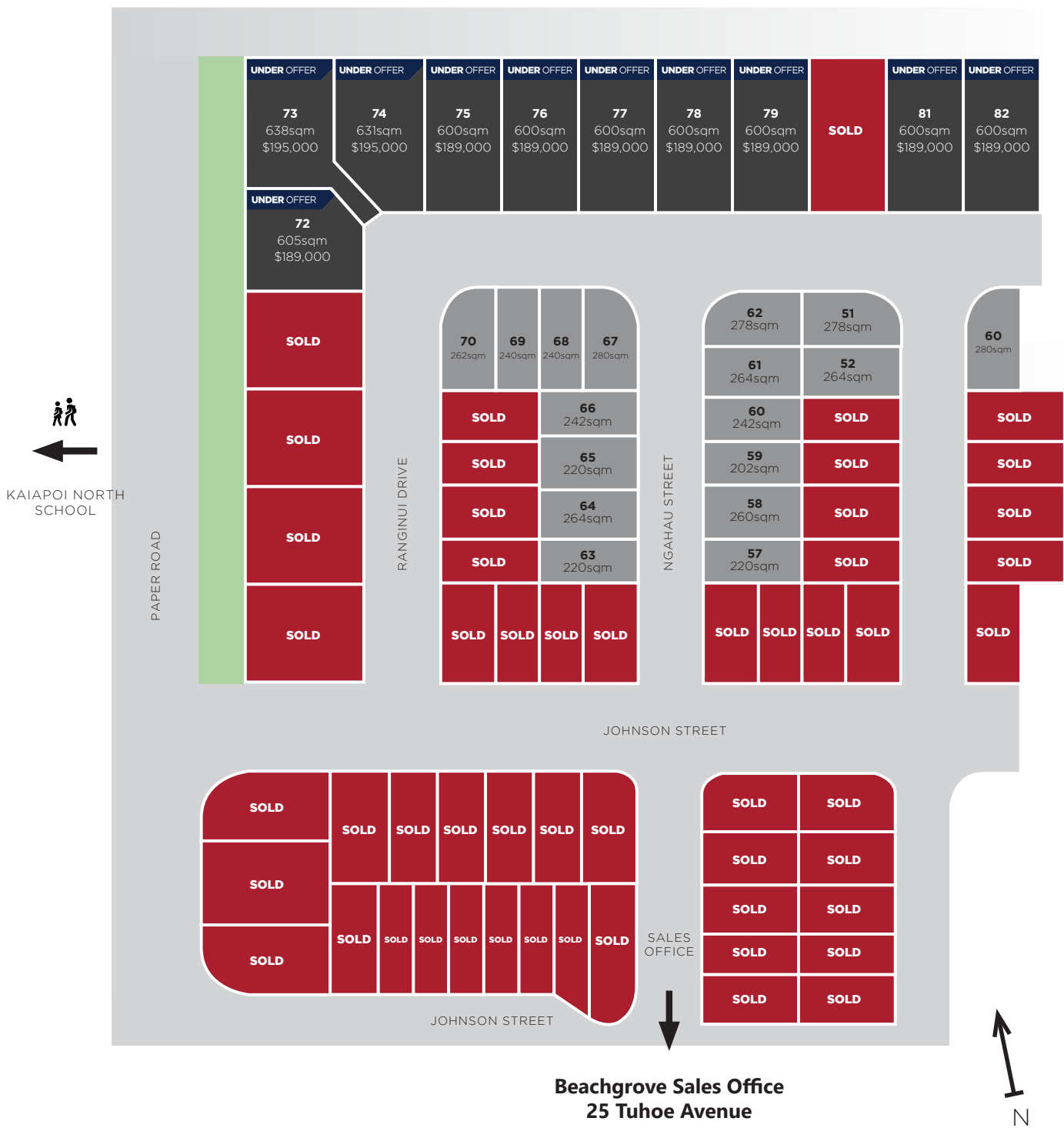
Beachgrove offers a broad and highly affordable range of sections, alongside house and land packages. This multi-staged development accommodates a large variety of choices for all residents. Whether you're working from home, working in one of the nearby bustling centres or prioritising quality of life, this is the perfect place to build your dream home, to your own specifications.

Lots 71 – 82 & 101 – 103 are available as house and land packages with one of our trusted build partners.

Lot Number	Lot Size	Price
71	600sqm	SOLD
72	605sqm	UNDER OFFER
73	638sqm	UNDER OFFER
74	631sqm	UNDER OFFER
75	600sqm	UNDER OFFER
76	600sqm	UNDER OFFER
77	600sqm	UNDER OFFER
78	600sqm	UNDER OFFER
79	600sqm	UNDER OFFER
80	600sqm	SOLD
81	600sqm	UNDER OFFER
82	600sqm	UNDER OFFER
101	568sqm	SOLD
102	601sqm	SOLD
103	490sqm	SOLD

From March 2020

STAGE 2 SITE PLAN



- House and Land
- Sold
- For Sale

Stage TWO HOUSE & LAND PACKAGES

HOUSE & LAND
PACKAGES
STARTING FROM
\$379,000

We only work with the best.

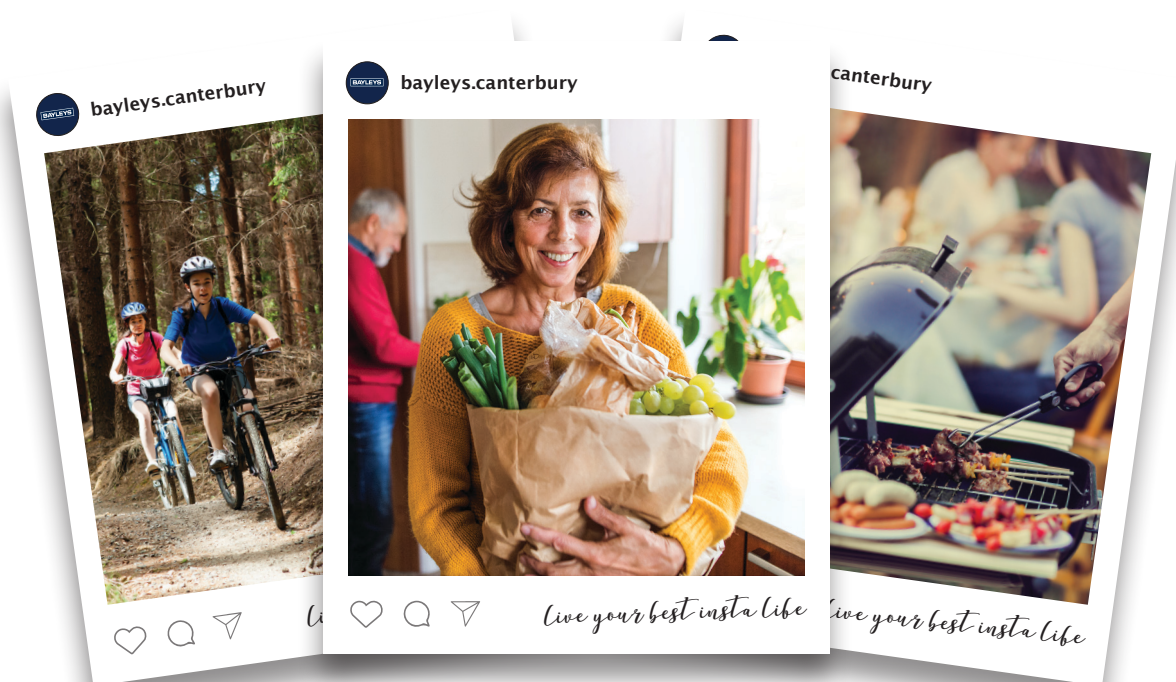
We are proud to work with many of the most popular and trusted brands in the Canterbury building industry. Our exclusive house and land packages offer the best home designs to suit each lot.

Canterbury's leading building companies are contributing to the Beachgrove's aesthetic. While the house and land packages offer different styles and designs, all the options available meet our mantra of being affordable, sustainable and built with quality in mind.

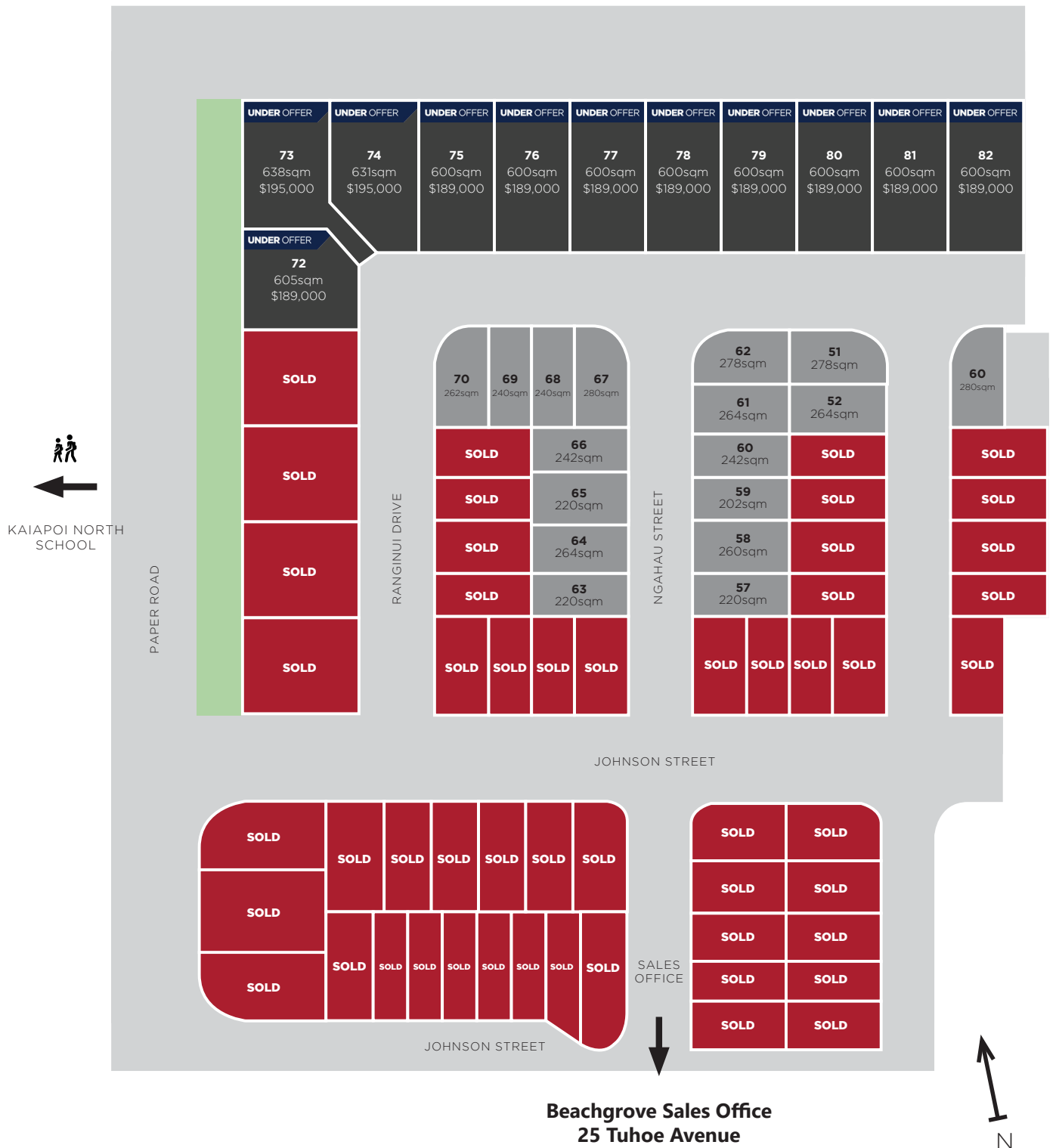
By working in conjunction with one of our reputable and trusted building partners, you can design your home to meet your every need.

Alternatively, you can purchase the section of your choice and use your own builder.

Families come in all shapes and sizes, as do the scale of blocks and budgets. Keeping this in mind we have designed a responsive range of house and land packages to ensure your new home is of outstanding quality.



STAGE 2 HOUSE AND LAND PACKAGES



- House and Land
- Sold
- For Sale
- Under Offer



MIKE GREER HOUSE AND LAND PACKAGES

Helping locals achieve more.

Mike Greer Homes has been building award-winning homes for over 25 years and have the capability and commitment required to create homes that stand the test of time.

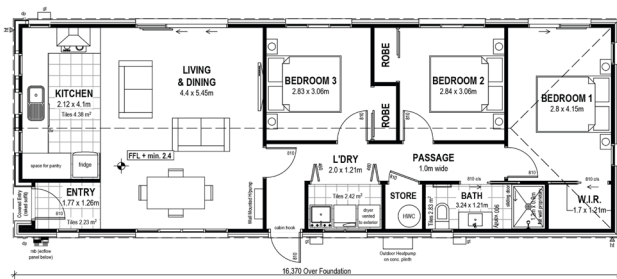
Mike Greer Homes are a customer focused team who work hard to deliver a result that exceeds expectations and while delivering on budget. Their long established relationships with suppliers and extensive experience in the industry means they can give you more of the best deals without compromising on quality or choice.

Regarded as one of New Zealand's leading residential design and build companies Mike Greer Homes have made it their life's work to create homes that are designed and built with purpose and passion.

Lot Number	Lot Size	Price
46	220sqm	SOLD
47	264sqm	SOLD
48	220sqm	SOLD
49	242sqm	SOLD
54	202sqm	SOLD
55	260sqm	SOLD
56	220sqm	SOLD
60	242sqm	\$425,000
71	600sqm	SOLD
72	605sqm	UNDER OFFER

LOT 46 | TURN KEY \$399,000

SOLD



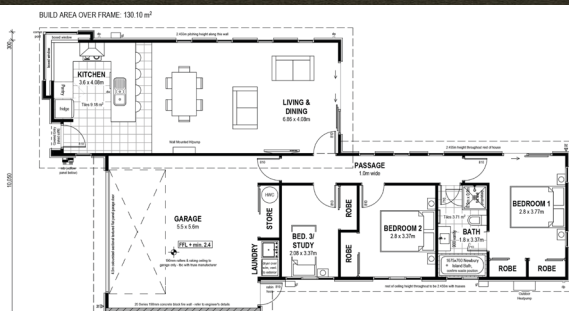
3 1 1 2

Level(s): 1
Lot Size: 220sqm

mikegreerhomes

LOT 47 | TURN KEY \$439,000

SOLD



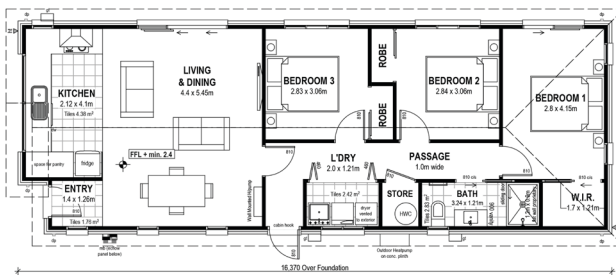
3 1 1 2

Level(s): 1
Lot Size: 264sqm

mikegreerhomes

LOT 48 | TURN KEY \$399,000

SOLD



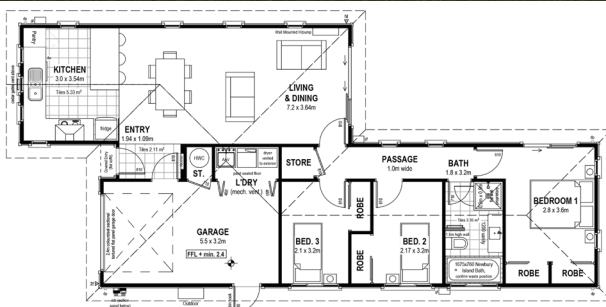
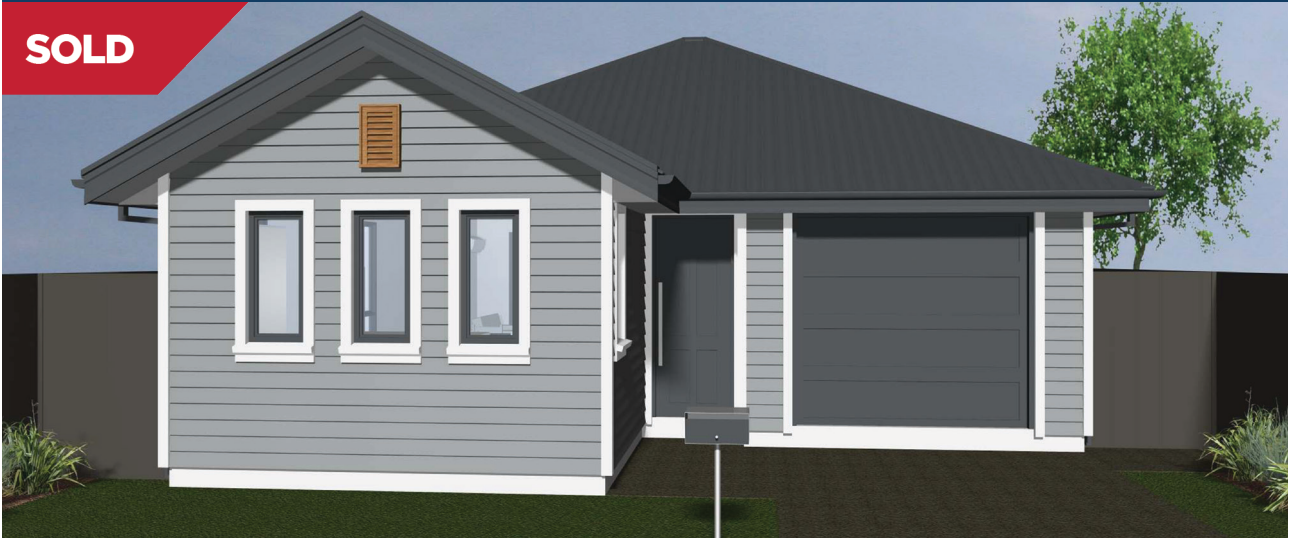
3 1 1 2

Level(s): 1
Lot Size: 220sqm

mikegreerhomes

LOT 49 | TURN KEY \$425,000

SOLD



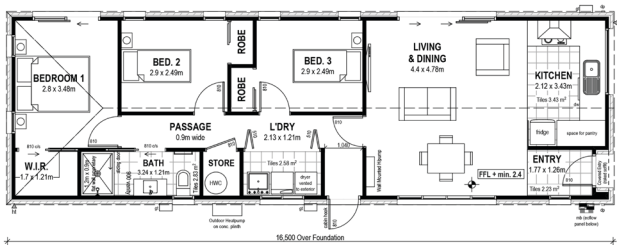
3 1 1 1

Level(s): 1
Lot Size: 242sqm

mikegreerhomes

LOT 54 | TURN KEY \$379,000

SOLD



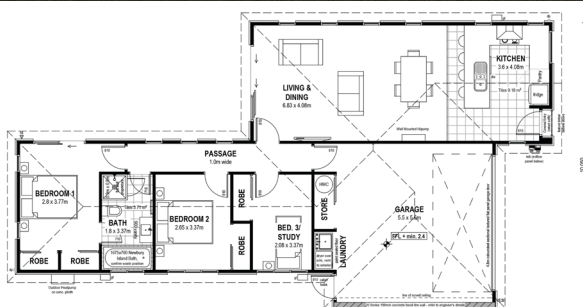
3 1 1 2

Level(s): 1
Lot Size: 202sqm

mikegreerhomes

LOT 55 | TURN KEY \$439,000

SOLD



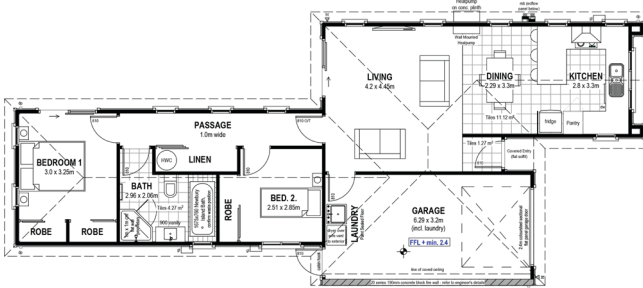
3 1 1 2

Level(s): 1
Lot Size: 260sqm

mikegreerhomes

LOT 56 | TURN KEY \$399,000

SOLD

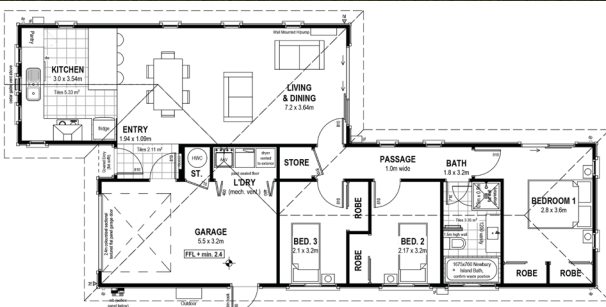


2 1 1 1

Level(s): 1
Lot Size: 220sqm

mikegreerhomes

LOT 60 | TURN KEY \$425,000



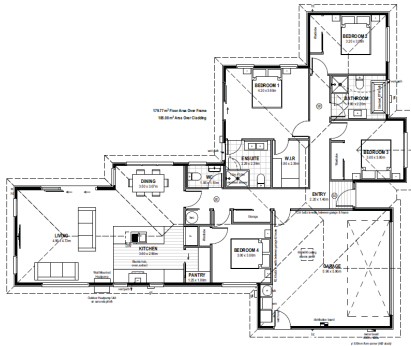
3 1 1 1

Level(s): 1
Lot Size: 242sqm

mikegreerhomes

LOT 71 | TURN KEY \$550,000

SOLD



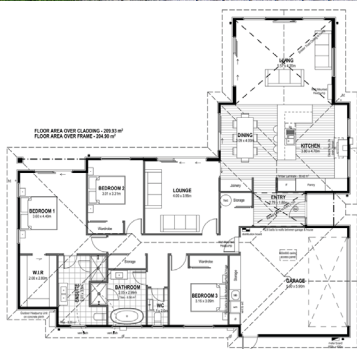
4 2 1 2

Level(s): 1
 Lot Size: 600sqm
 Floor Area: 179.77sqm

mikegreerhomes

LOT 72 | TURN KEY \$630,000

UNDER OFFER



3 2 2 2

Level(s): 1
 Lot Size: 605sqm
 Floor Area: 204.90sqm

mikegreerhomes

Artist's Impression Only
www.virtual-media.co.nz



TRIDENT HOMES HOUSE AND LAND PACKAGES

Designed for living, built for life.

Trident Homes is a New Zealand based home builder with a relentless commitment to home-building innovation with modern home designs and custom made house plans to suit your family requirements and budget.

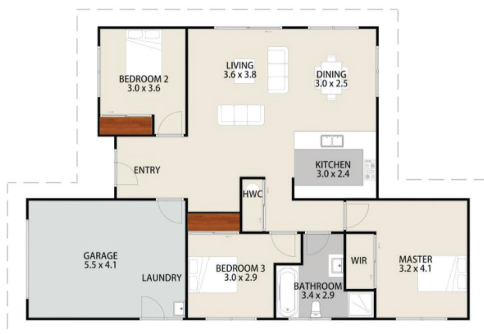
Taking pride in being home builders who specialise in building innovative modern homes with customers' thoughts in mind. Trident Homes innovative plans are also affordable for customers – but it doesn't come at the expense of quality.

There are many things to consider when building a new house and Trident Homes makes it easy with many years of real estate building experience and a fully Trade Qualified workforce.

Lot Number	Lot Size	Priced from
76	600sqm	UNDER OFFER
78	600sqm	UNDER OFFER
79	600sqm	UNDER OFFER
80	600sqm	SOLD
81	600sqm	UNDER OFFER
82	600sqm	UNDER OFFER

LOT 76 | HOUSE & LAND FROM \$461,000

UNDER OFFER



3 1 1 1

Level(s): 1
 Lot Size: 600sqm
 Floor Area: 130sqm

TRIDENT HOMES
 Designed for living. Built for life.

LOT 78 | HOUSE & LAND FROM \$588,000

UNDER OFFER



4 2 2 2

Level(s): 1
 Lot Size: 600sqm
 Floor Area: 221sqm

TRIDENT HOMES
 Designed for living. Built for life.

LOT 79 | HOUSE & LAND FROM \$559,000

UNDER OFFER



4 2 2 2

Level(s): 1
 Lot Size: 600sqm
 Floor Area: 202sqm

TRIDENT HOMES
 Designed for living. Built for life.

LOT 80 | HOUSE & LAND FROM \$523,000

SOLD



3 2 1 2

Level(s): 1
 Lot Size: 600sqm
 Floor Area: 163sqm

TRIDENT HOMES
 Designed for living. Built for life.

LOT 81 | HOUSE & LAND FROM \$564,000

UNDER OFFER



3 2 2 2

Level(s): 1
Lot Size: 600sqm
Floor Area: 204sqm

TRIDENT HOMES
Designed for living. Built for life.

LOT 82 | HOUSE & LAND FROM \$518,000

UNDER OFFER



3 2 1 2

Level(s): 1
Lot Size: 600sqm
Floor Area: 163sqm

TRIDENT HOMES
Designed for living. Built for life.



FRAEMOHS FIRST BY FRAEMOHS HOMES HOUSE AND LAND PACKAGES

Naturally healthy homes

Fraemohs has been manufacturing and building high quality solid timber homes for the New Zealand and overseas markets since 1968.

With a dedicated team of highly experienced new home consultants, architectural designers, builders and tradespeople working together to help you create the dream home you love. You will be involved throughout the entire process, from the initial design phase to the final coat of paint.

Fraemohs believes in building homes, not just houses. A home is much more than four walls and a roof. It is where your child learns to crawl, then walk, then throw a rugby ball. Home is where family and friends get together to celebrate milestones.

Lot Number	Lot Size	Priced from
71	600sqm	SOLD
72	605sqm	UNDER OFFER

LOT 71 | HOUSE & LAND PACKAGE FROM \$539,000

SOLD



Artistic Impression Only: NTS

3 2 2 2

Level(s): 1
Lot Size: 600sqm
Floor Area: 175.5sqm

FRAEMOHS
FIRST

LOT 72 | HOUSE & LAND PACKAGE FROM \$549,000

UNDER OFFER



Artistic Impression Only: NTS

4 2 2 2

Level(s): 1
Lot Size: 605sqm
Floor Area: 182.42sqm

FRAEMOHS
FIRST



BROADHURST BUILDERS HOUSE AND LAND PACKAGE

Family home specialists.

Whether it's your first home or your forever dream home Broadhurst Builders have you covered with all the experts in one place to make the whole process simple, enjoyable and most importantly stress free.

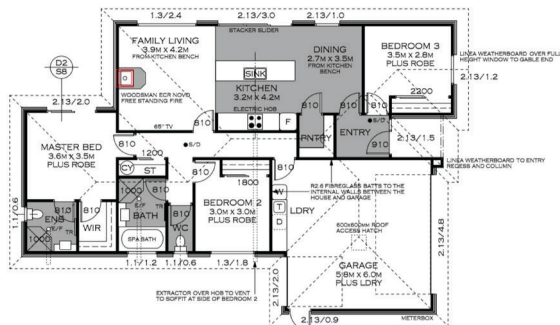
Delivering well thought out and well planned design with a team of professionals who consider all your wants and needs to formulate a home to be practical and usable for you and your family.

Broadhurst Builders deliver top quality products, workmanship and trade qualified builders and subcontractors at solely focused on producing a home that not only meet all standards, providing excellent value for money that will last a lifetime.

Lot Number	Lot Size	Price
77	600sqm	UNDER OFFER

LOT 77 | HOUSE & LAND PACKAGE FROM \$512,000

UNDER OFFER



3 2 1 2

Level(s): 1
Lot Size: 600sqm
Floor Area: 160.05sqm



Ready to call Beachgrove Home? We can help.

Due to the ever-changing lending environment and often complicated nature of particular loans, consulting with a mortgage adviser can give you another level of support during key financial steps of your property transaction.

What sets us apart?

- It's a free service when going through us to a bank because the bank pays our fee. If using a specialist lending, there will be a fee involved, which we'll let you know about in advance.
- We represent your best interests and secure you the best rates and most favourable terms and conditions.
- We make it hassle free. If for any reason your first application isn't successful, we go to other banks on your behalf and you don't have to complete extra forms.

Beachside calling?

We know finance, working closely with Bayleys Prestons our leading team can help you find the best finance and rates to get you established in Beachgrove, Kaiapoi.



THE NEW ZEALAND
MORTGAGE COMPANY

BAYLEYS

Jeremy Meachem

Eastern Region

021 482 154

CONTACT US

With a range of distinctly different section sizes across the development, Beachgrove is perfect for first home buyers, families, investors and downsizers.

Beachgrove has something for everyone, visit our site office Sunday and Wednesday 2 – 4pm or contact Shaun or Liam to secure your dream section.



Shaun Creek

Shaun's easy-going, approachable nature can't disguise his strong work ethic and professionalism. For Shaun, it's all about engaging with people, building trust and forming meaningful relationships.

Shaun Creek | 022 034 4769 | shaun.creek@bayleys.co.nz



Liam Worsfold

Liam's proven work ethic and integrity towards clients and customers alike means you can rely on him to offer a professional service.

Liam Worsfold | 022 017 3606 | liam.worsfold@bayleys.co.nz





BEACHGROVE

liveatbeachgrove.co.nz

BAYLEYS

WHALAN AND PARTNERS LTD, BAYLEYS,
LICENSED UNDER THE REA ACT 2008